

Overview

DataGryd offers the most strategic international data network hub and largest single footprint data center available in New York City. DataGryd's 60 Hudson facility in Lower Manhattan provides up to 60,000 square-feet of available colocation space and state-of-the-art power and cooling infrastructure for data network, telecommunications, cloud and large enterprises. Located in one of the world's most concentrated hubs of Internet connectivity, 60 Hudson provides access to more than 300 interconnected carriers and exchanges, with multiple Points of Entry (POEs) from diverse data network providers and direct fiber conduits.

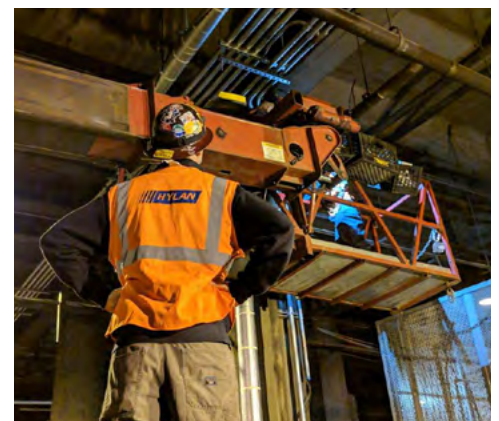
Hylan is a leading provider of full-service turnkey communications solutions, electrical infrastructure design and construction services for wireline, wireless and smart city municipal services across the United States. Hylan is the parent company to four divisions that include Hylan Datacom & Electrical, Hylan West, Down Under Construction and Western Utility. Hylan Companies provide an array of comprehensive services, which include communications and electrical infrastructure design, DAS and small cell installations, engineering, construction and maintenance services, and more. Originally founded as Hylan Datacom & Electrical 60 years ago in New York City, Hylan now serves a wide variety of end-markets throughout the U.S., with current offices and facilities in New York, New Jersey, Arizona, California, Illinois, Maryland, Pennsylvania, Utah and Virginia. Supported by private equity firms Flexis Capital and TZP Capital Partners to accelerate its growth strategy, Hylan plans for additional expansions throughout the U.S. in 2020 and beyond.

Challenge

DataGryd was seeking to expand the footprint of its data center at 60 Hudson Street. This expansion into the 6th floor of the existing facility required working with a construction company well versed in telecommunications infrastructure builds to assist with the electrical build for the project. DataGryd needed a company with a thorough understanding of these types of builds, as electrical infrastructure is absolutely paramount for a data center. The company was seeking a construction interest that delivered results within budget and on time. It was also looking for a company with which it could establish a longer-term relationship for future build-outs.

Solution

Hylan's comprehensive "cradle to grave" solution was the initial selling point for DataGryd. But what really made Hylan attractive, in the early stages, was Hylan's extensive experience in telecom infrastructure construction. This meant that DataGryd would get quality workmanship, on time and under budget. DataGryd contracted Hylan to build out the infrastructure for its 1 MW data hall, with plans to continue the work in the future.



"As we look to further expand within our footprint we would continue to leverage the work they have already completed. Hylan has a great team from the Board on down. It was a pleasure working with them."

– Tom Brown,
President & CEO, DataGryd